

DIAGRAM 1 - MACHINE

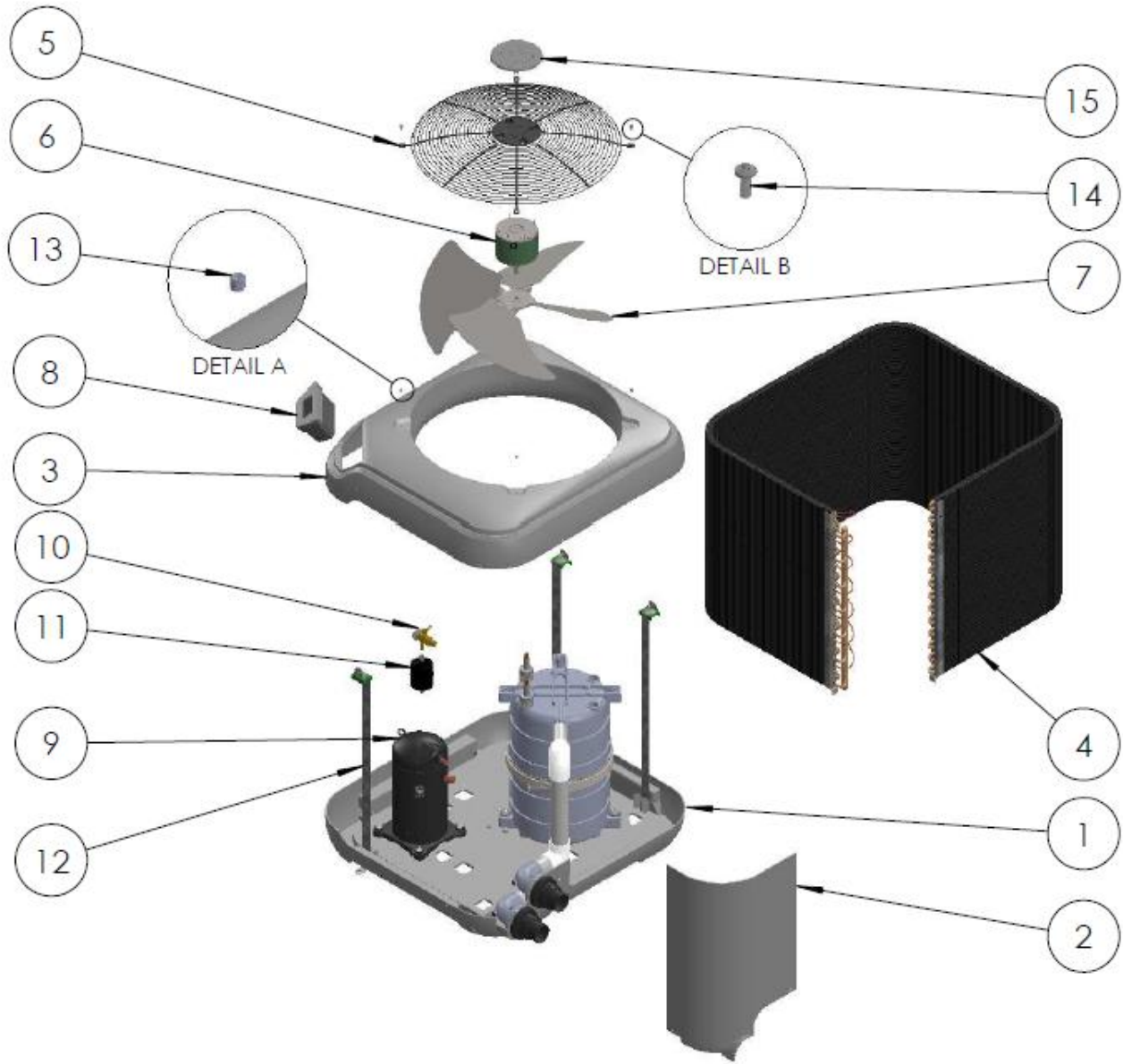


DIAGRAM 2 – CANISTER / HEAT EXCHANGER

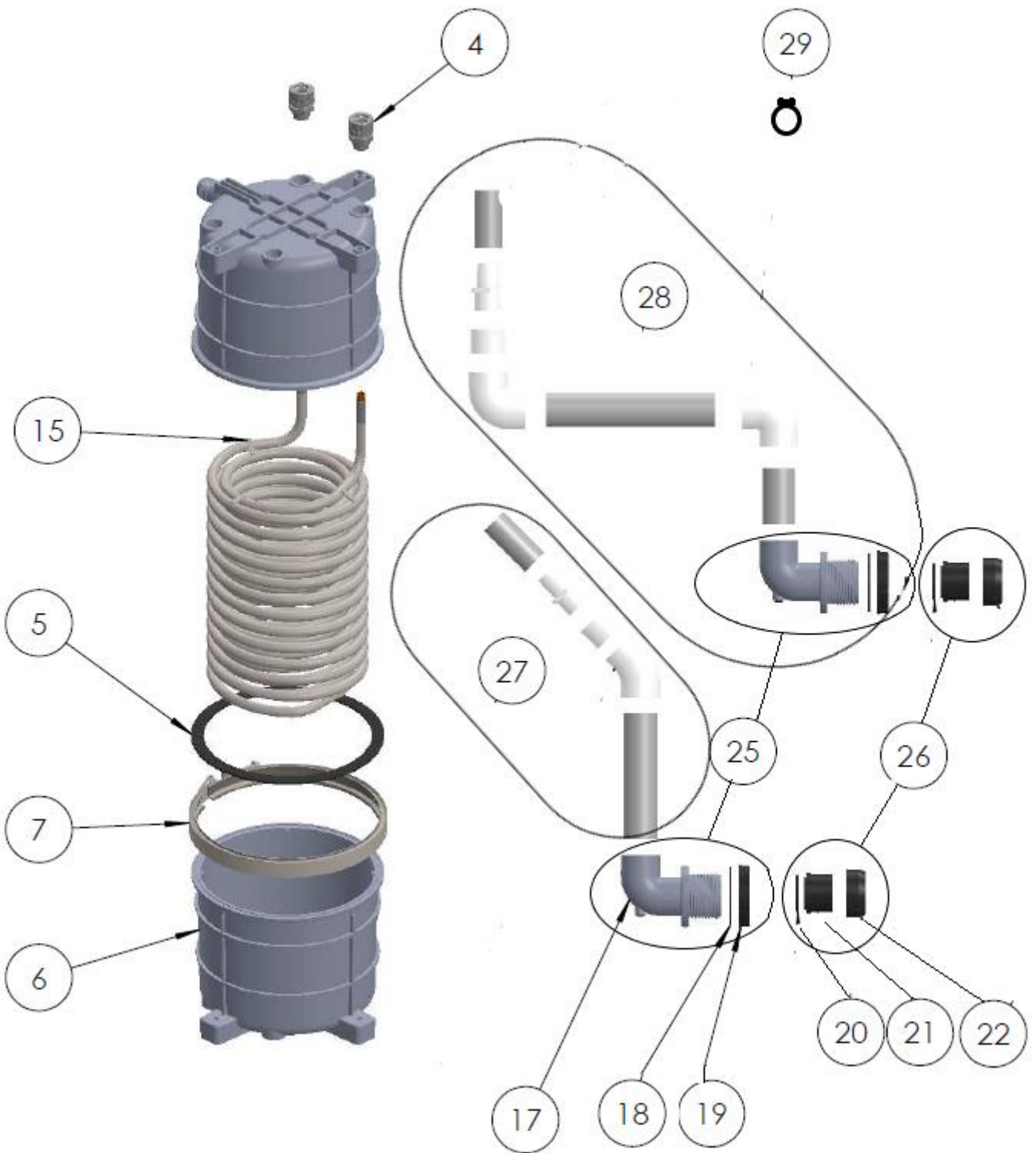


DIAGRAM 3 – ELECTRIC BOX

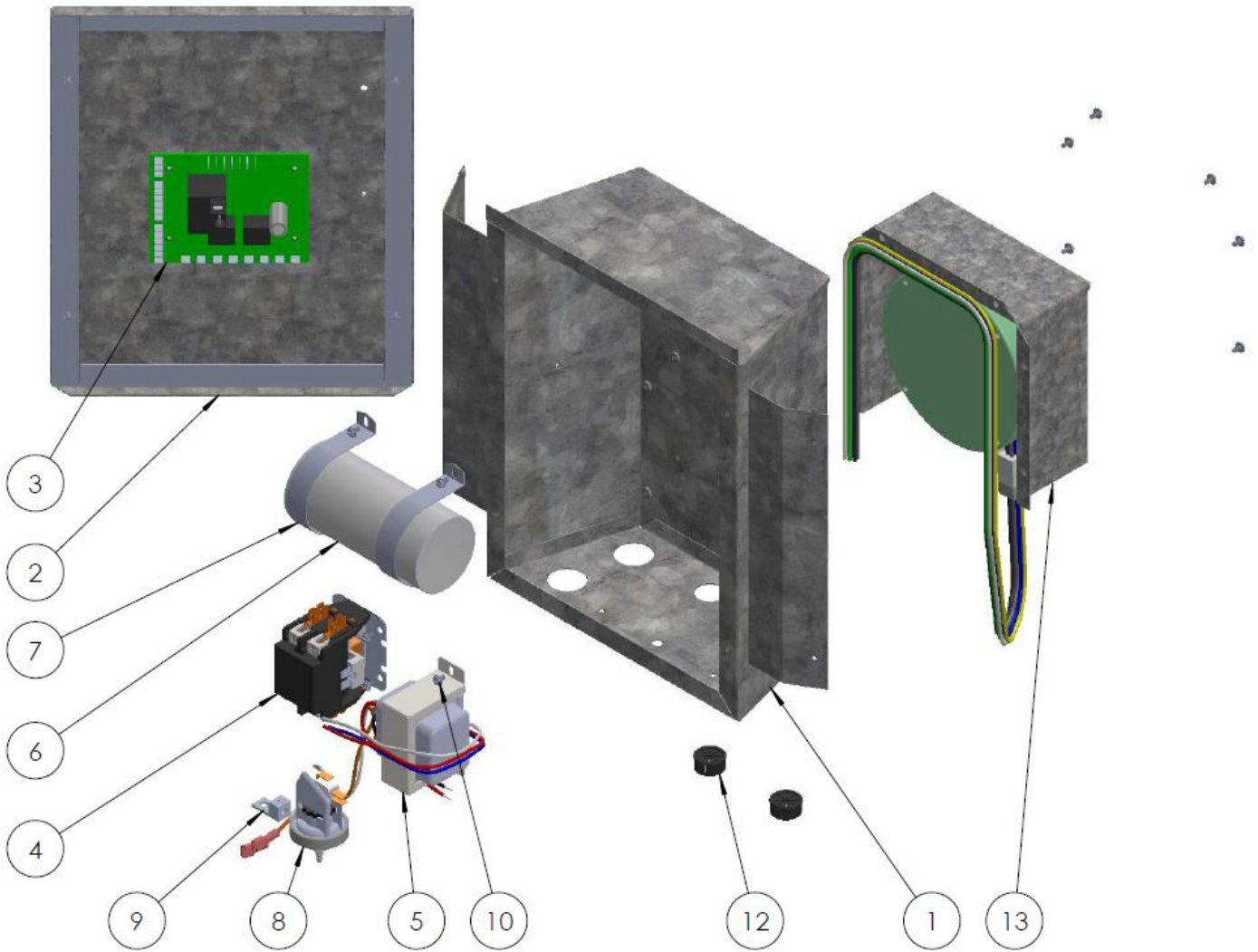


DIAGRAM 1 – MACHINE

| PART DESCRIPTION | PART CODE | | |
|--|------------------------|-----------------------|-----------------------|
| MACHINE TYPE | FC95SF | FC115SF | FC135SF |
| 1-MACHINE BASE | A-10-KITFCB-CG1 | | |
| 2-MACHINE DOOR | A-10-KITFCP28-CG1 | A-10-KITFCP28-CG1 | A-10-KITFCP32-CG1 |
| 3- MACHINE TOP ASSEMBLY | A-10-KITFCT-CG1 | | |
| 4-EVAPORATOR | A-30- EVAP2811618B | A-30- EVAP2811618B | A-30- EVAP3211618B |
| 5- FAN GUARD | A-40-FAG2615 | | |
| 6- FAN MOTOR | A-40-MOT1482560 | A-40-MOT1382560 | A-40-MOT1382560 |
| 7- FAN BLADE | A-40-FANL2630 | A-40-FANL2632 | A-40-FANL2634 |
| 8- DISPLAY BOX ASSEMBLY | DISPLAY BOX ASSEMBLY | | |
| 8a – DISPLAY BOARD | A-40-DISPHP728FC | | |
| 8b – DISPLAY MEMBRANE | A-40-MBRFCF | | |
| 8c – DISPLAY BOX PLASTICS | A-40-BOITEDFC | | |
| 8d – WIFI MODULE | A-40-WIFIFC (OPTIONAL) | | |
| 8e – DISPLAY BOX CABLE | A-40-DISPCABLE | | |
| 9- COMPRESSOR | COMPFC95-6A1 | COMPFC115-6A1 | COMPFC135-6A1 |
| 9a – COMPRESSOR WIRING HARNESS | B-10-200298 | | |
| 10- THERMOSTATIC EXPANSION VALVE | VALVEFC95 | VALVEFC115 | VALVEFC135 |
| 10a –LOW REFRIGERANT PRESSURE SWITCH | A-40-SWITCH-LP516R410 | | |
| 10b – HIGH REFRIGERANT PRESSURE SWITCH | A-40-SWITCH-LP516R410 | | |
| 11- FILTER DRYER | A-30-FILTERF | | |
| 12- SUPPORT BARS | A-50-FBFC28 | A-50-FBFC28 | A-50-FBFC32 |
| 13- MACHINE ASSEMBLY SCREWS | C-99-200257 | | |
| 14 – FAN GUARD SCREWS | C-99-200255 | | |
| 15- FAN MOTOR CAP | B-50-FANCAPFC | | |

| DIAGRAM 2 – CANISTER | | | |
|--|---|----------------|----------------|
| PART DESCRIPTION | PART CODE | | |
| MACHINE TYPE | FC95SF | FC115SF | FC135SF |
| 4 - DOME CONNECTOR (2/machine) | A-20-DOME1 | | |
| 5 - CANISTER GASKET | B-20-100088 | | |
| 6 – CANISTER HALF (2/machine) | A-20-CAN15LG | | |
| 7 – V-BAND CLAMP | A-20-VBAND15 | | |
| 7a – T-BOLT FOR CLAMP | B-20-VIS-TBOLT516x45 | | |
| 15- TITANIUM COIL ASSEMBLY | TIFC95 | TIFC115 | TIFC135 |
| 25- TANK ADAPTOR ASSEMBLY (Parts 17,18,19) | A-10-PLA-TANK2FC | | |
| 26- 2” QUICK CONNECT FITTING ASSEMBLY (Parts 20,21,22) | A-10-ADAP2FC – NOTE INCLUDES O-RING (PART 20), GLUE IN SLEEVE (PART 21) AND THREADED NUT (PART 22) | | |
| 27- LOWER TUBE ASSEMBLY | UNGLUED PLASTIC TUBES AND ADAPTORS FOR CANISTER, INCLUDING A-10-PLA-TANK2FC | | |
| 28- UPPER TUBE ASSEMBLY | UNGLUED PLASTIC TUBES AND ADAPTORS FOR CANISTER INCLUDING A-10-PLA-TANK2FC | | |
| 29 – CANISTER TUBE CLAMP | B-10-CLAMP515 (TO CONNECT LOWER AND UPPER TUBE ASSEMBLIES TO CANISTER) | | |

| DIAGRAM 3 – ELECTRIC BOX | | | |
|--|--|------------------|------------------|
| 1 - ELECTRIC BOX | A-40-BOITEFC | | |
| 2- ELECTRIC BOX COVER | A-40-BOITEFC-F | | |
| 3- CONTROL BOARD | A-40-CARTEHP728FC | | |
| 4- CONTACTOR | A-40-CONT40-1PH | | |
| 5- TRANSFORMER | A-40-TRANS240 | | |
| 6- RUN CAPACITOR | A-40-CAP80005440 | A-40-CAP80005440 | A-40-CAP80005440 |
| 7- RUN CAP SUPPORT | B-40-200264 | | |
| 8- FLOW SWITCH | A-40-SWITCH-FS | | |
| 9- GROUND LUG | C-40-200027 | | |
| 10- MOUNTING SCREWS | C-40-VIS42412SS | | |
| 11 – CABLE PROTECTOR | C-40-200015 | | |
| TEMPERATURE SENSORS (DEFROST, AIR, AND WATER) | C-40-200031.5 (WHITE WIRE TEMP PROBE) C-40-200031.6 (BLACK WIRE TEMP PROBE) | | |
| 13- VSD DRIVE BOX | N/A | | |